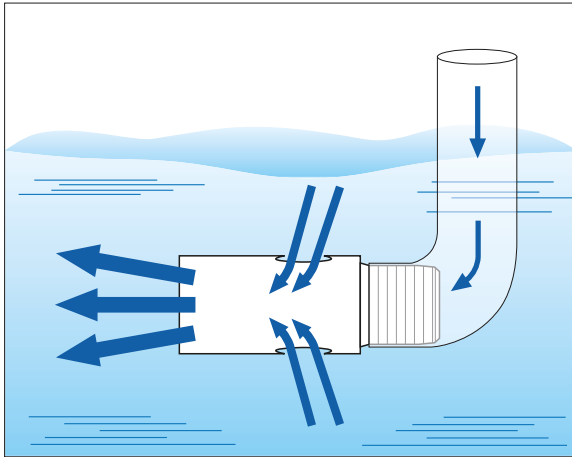


Ejector Nozzle for Solution Agitation

EJX

Solid Stream



[Features]

- Taking in surrounding liquid, EJX series solution agitation nozzle spouts out 3–4 times more volume than the amount supplied.
- Small size and simple structure suitable for multiple-nozzle arrangement.

[Standard pressure]

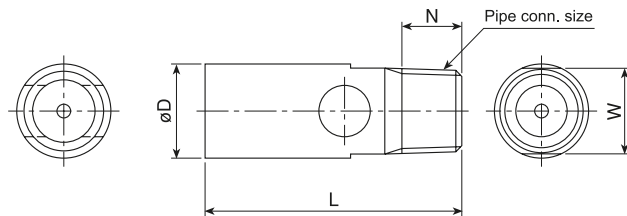
0.05 MPa

[Applications]

- Solution agitation, preventing deposition, uniformizing concentration and pH
- Cleaning in liquids
- Submerged etching
- Plating

EJX series

EJX series						
Structure	• One-piece structure.					
Material	• S303 (S304 for sizes R1" and R1*1/2") • PP (PVC for sizes R1" and R1*1/2")					
Pipe conn. size	Dimensions (mm)				Mass (g)	
	L	W	øD	N	S303 S304	PP PVC
R1/8	30	10 (11) ²	11	7	11	1.3 ^{*1}
R1/4	48	14 (16) ²	16	10.5	26	3.2 ^{*1}
R3/8	72	22	24	11	80	10
R1/2	93	27	31	14	170	20
R3/4	126	34	42	15	420	48
R1	172	60	76.3 (80) ²	18	2,200	460
R1*1/2	212	80	89.1 (90) ²	20	3,200	540



*1) Sizes R1/8" and R1/4" made of PP are injection molded.

*2) Dimensions in () shows those of plastic EJX series nozzles.

[Note] Appearance and dimensions may differ slightly depending on materials and nozzle codes.

Supplied volume code	Pipe conn. size	Supplied water volume (ℓ/min)						Outlet water volume (ℓ/min) [Reference only]						Free passage diameter (mm)
		0.03 MPa	0.05 MPa	0.1 MPa	0.15 MPa	0.2 MPa	0.3 MPa	0.03 MPa	0.05 MPa	0.1 MPa	0.15 MPa	0.2 MPa	0.3 MPa	
1	R1/8	0.85	1.10	1.56	1.91	2.20	2.69	2.2	3.1	5.0	6.6	9.2	10	1.5
4	R1/4	3.10	4.00	5.66	6.93	8.00	9.80	8.1	11	18	24	34	38	2.8
9	R3/8	6.97	9.00	12.7	15.6	18.0	22.0	18	26	41	54	75	85	4.2
16	R1/2	12.4	16.0	22.6	27.7	32.0	39.2	33	46	72	95	134	151	5.7
30	R3/4	23.2	30.0	42.4	52.0	60.0	73.5	61	86	140	180	250	280	7.7
90	R1	69.7	90.0	127	156	180	220	180	260	410	540	760	850	13.3
160	R1*1/2	124	160	226	277	320	392	330	460	720	950	1340	1510	17.5

How to order

Please inquire or order for a specific nozzle using this coding system.

〈Example〉 3/8M EJX 1-9 PP

3/8M EJX 1 - 9 PP

Pipe conn. size ^{*3}	Supplied volume code	Material
■ 1/8M	■ 1	■ S303
■ 1/4M	■ 4	■ S304 (for sizes 1M and 1*1/2M)
■ 1*1/2M	■ 160	■ PP (PP-IN for sizes 1/8M and 1/4M)
		■ PVC (for sizes 1M and 1*1/2M)

*3) "M" indicates male thread ("R" of the ISO standard) and "F" indicates female thread ("Rc" of the ISO standard), e.g. 1/8M = R1/8".